

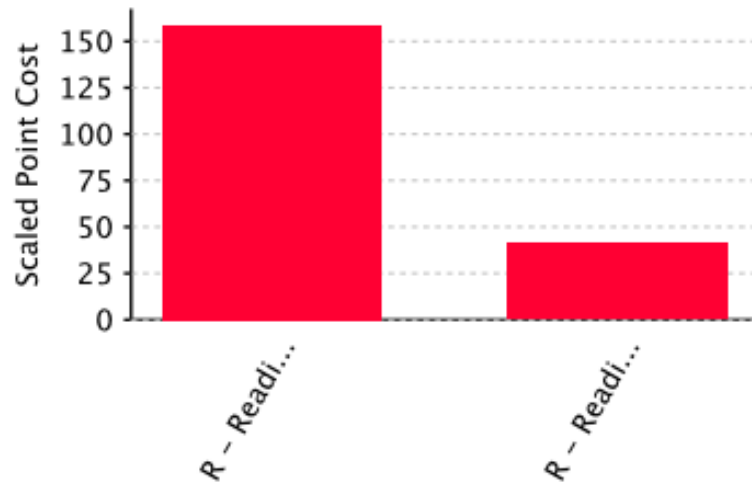
rPSAT Diagnostic for Student1 Lname

Big Picture — Your Scores, Practice History, and Trends

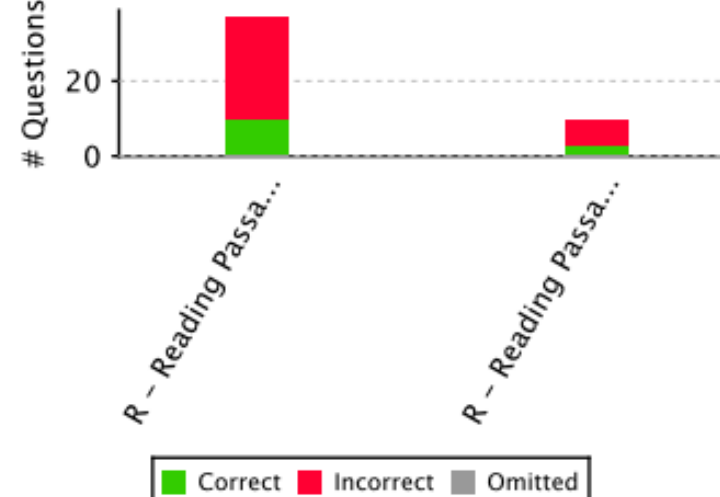
Performance Summary

| | <i>Reading</i> | <i>Total</i> | <i>Total (R+W)</i> |
|-------------------|----------------|--------------|--------------------|
| 2016-11-28 | 180 | 180 | 180 |
| Points to Perfect | 200 | 200 | 200 |
| Maximum Points | 380 | 380 | 380 |

Point Cost By Question Type



Performance By Question Type



Subject Area & Question Type Analysis

| <i>Question Type</i> | <i>Correct</i> | <i>Wrong</i> | <i>Omit</i> | <i>Total</i> | <i>Raw</i> | <i>% Correct</i> | <i>% Raw</i> | <i>Point Cost</i> |
|--------------------------|----------------|--------------|-------------|--------------|-------------|------------------|--------------|-------------------|
| Reading | 13 | 34 | 0 | 47 | 13.0 | 27% | 27% | 200 |
| Reading Passage - Single | 10 | 27 | 0 | 37 | 10.0 | 27% | 27% | 158.8 |
| Reading Passage - Paired | 3 | 7 | 0 | 10 | 3.0 | 30% | 30% | 41.2 |

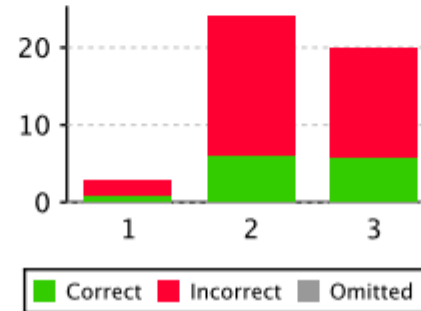
Notes

Section Summary — Reading

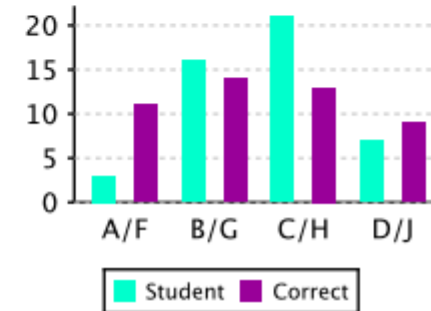
Summary

| | |
|-------------|------------|
| Your Score: | 180 |
| Correct: | 13 |
| Incorrect: | 34 |
| Omitted: | 0 |
| Raw Points: | 13.0 |
| % Correct: | 28% |
| % Raw: | 28% |

By Difficulty



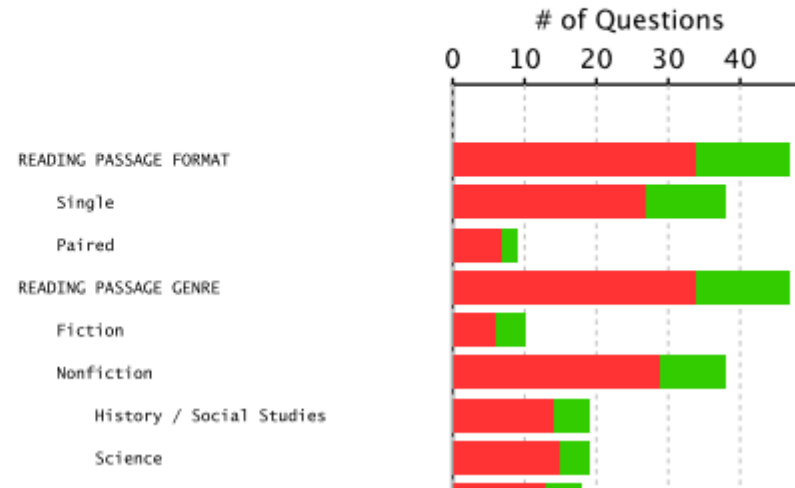
Answer Distribution



Responses

| Question | Correct Answer | Response | Difficulty | Category | Topic |
|----------------------------|----------------|----------|------------|--|--|
| Section 1 - Reading | | | | | |
| 1 | D | A | 2 | Reading Passage - Single, Fiction, Topic, Main Idea, Theme | Single, Fiction, Topic, Main Idea, Theme |
| 2 | B | + | 3 | Reading Passage - Single, Fiction, Facts | Single, Fiction, Facts |
| 3 | C | + | 3 | Reading Passage - Single, Fiction, Citing Textual Evidence | Single, Fiction, Citing Textual Evidence |
| 4 | B | C | 1 | Reading Passage - Single, Fiction, Inferences, Implications | Single, Fiction, Inferences, Implications |
| 5 | D | C | 2 | Reading Passage - Single, Fiction, Citing Textual Evidence | Single, Fiction, Citing Textual Evidence |
| 6 | A | C | 1 | Reading Passage - Single, Fiction, Vocabulary in Context | Single, Fiction, Vocabulary in Context |
| 7 | C | + | 1 | Reading Passage - Single, Fiction, Vocabulary in Context | Single, Fiction, Vocabulary in Context |
| 8 | B | C | 2 | Reading Passage - Single, Fiction, Purpose | Single, Fiction, Purpose |
| 9 | D | + | 2 | Reading Passage - Single, Fiction, Purpose | Single, Fiction, Purpose |
| 10 | C | D | 3 | Reading Passage - Single, History / Social Studies, Purpose | Single, History / Social Studies, Purpose |
| 11 | B | D | 2 | Reading Passage - Single, History / Social Studies, Facts | Single, History / Social Studies, Facts |
| 12 | C | D | 2 | Reading Passage - Single, History / Social Studies, Citing Textual | Single, History / Social Studies, Citing Textual |
| 13 | A | D | 2 | Reading - Single, Fiction, History / Social Studies | Single, Fiction, History / Social Studies |

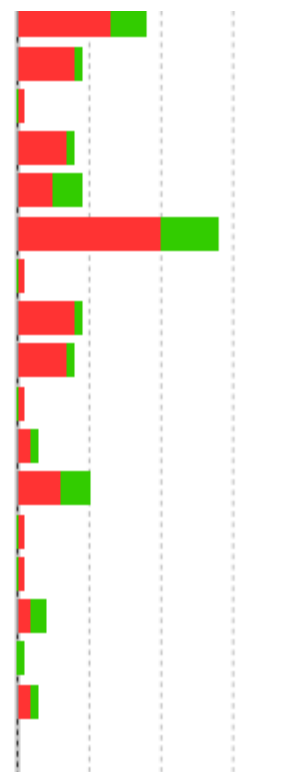
Performance By Topic



| | | | | | |
|----|---|---|---|-------------------|---|
| 14 | A | D | 2 | Passage - Reading | Single, History / Social Studies, Citing Textual |
| 15 | C | D | 3 | Passage - Reading | Single, History / Social Studies, Vocabulary in |
| 16 | C | + | 2 | Passage - Reading | Single, History / Social Studies, Vocabulary in |
| 17 | C | + | 2 | Passage - Reading | Single, History / Social Studies, Fluidity of Data to |
| 18 | B | C | 3 | Passage - Reading | Single, History / Social Studies, Fluidity of Data |
| 19 | B | C | 2 | Passage - Reading | Single, Science, Structure |
| 20 | D | C | 2 | Passage - Reading | Single, Science, Assumptions |
| 21 | B | C | 2 | Passage - Reading | Single, Science, Citing Textual Evidence |
| 22 | D | C | 3 | Passage - Reading | Single, Science, Vocabulary in Context |
| 23 | B | C | 2 | Passage - Reading | Single, Science, Purpose |
| 24 | A | C | 3 | Passage - Reading | Single, Science, Vocabulary in Context |
| 25 | C | + | 3 | Passage - Reading | Single, Science, Inferences, Implications |
| 26 | C | B | 2 | Passage - Reading | Single, Science, Citing Textual Evidence |
| 27 | A | B | 2 | Passage - Reading | Single, Science, Fluidity of Data to Text |
| 28 | B | + | 3 | Passage - Reading | Single, Science, Interpreting Data: Graphs, Tables |
| 29 | D | B | 3 | Passage - Reading | Single, History / Social Studies, Purpose |
| 30 | C | B | 3 | Passage - Reading | Single, History / Social Studies, Purpose |
| 31 | A | B | 3 | Passage - Reading | Single, History / Social Studies, Purpose |
| 32 | C | B | 3 | Passage - Reading | Single, History / Social Studies, Facts |
| 33 | B | + | 3 | Passage - Reading | Single, History / Social Studies, Citing Textual |
| 34 | C | B | 3 | Passage - Reading | Single, History / Social Studies, Facts |
| 35 | B | + | 2 | Passage - Reading | Single, History / Social Studies, Citing Textual |
| 36 | A | C | 2 | Passage - Reading | Single, History / Social Studies, Facts |
| 37 | A | C | 3 | Passage - Reading | Single, History / Social Studies, Inferences, |
| 38 | C | + | 2 | Passage - Reading | Single, History / Social Studies, Vocabulary in |
| 39 | B | C | 2 | Passage - Reading | Paired, Science, Purpose |
| 40 | B | + | 2 | Passage - Reading | Paired, Science, Vocabulary in Context |
| 41 | D | B | 2 | Passage - Reading | Paired, Science, Vocabulary in Context |

READING PASSAGE QUESTION TYPES

Essay Structure
Structure
Purpose
Vocabulary in Context
CONTENT
Topic, Main Idea, Theme
Details in Passage
Facts
Assumptions
Inferences, Implications
Citing Textual Evidence
Comparing Argument
Comparison-Contrast
Analyzing Quantative Information
Interpreting Data: Graphs, Table
Fluidity of Data to Text



Incorrect Omitted Correct